

## DASEOC™ Configuration for IPAWS Cloud Service

### Introduction

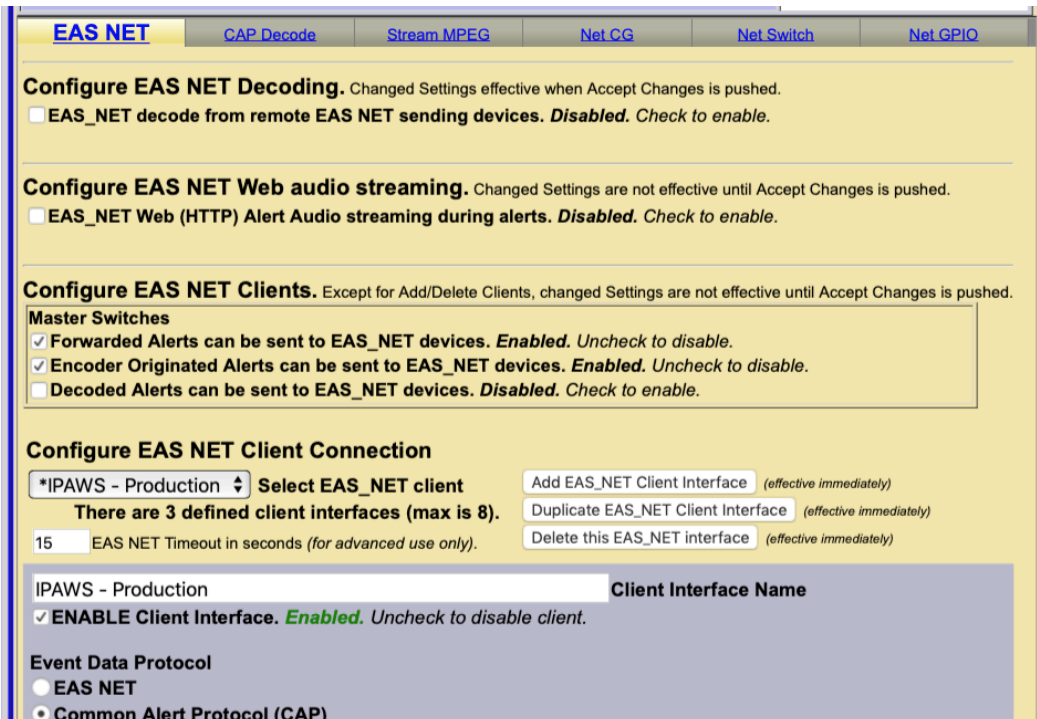
On or about March 14, 2021, the Federal Emergency Management Agency (FEMA) Integrated Public Alert and Warning System (IPAWS) will relocate their service from fixed servers to cloud-based servers. This changes the communication link used by the DASEOC to reach the IPAWS servers and necessitates customers with DASEOC units used and authorized to send alerts to IPAWS to make a small adjustment to the settings to assure continued operation.

IMPORTANT NOTE: Since both the Production – where actual alerts are processed – and the Lab – used for demo and test alerts are changing will be necessary to modify both clients.

FEMA has further clarified these changes should be made any time between April 1, 2021 and May 31, 2021.

### Changing the FEMA IPAWS Cloud server link for Production.

1. Log in to the DASEOC
2. Go to **Setup > Net Alerts > EAS NET**
3. Under **Configure EAS NET Client Connection** use the pull-down menu to select the client used to connect with IPAWS as shown in the example below noting the Client Interface Name may be different.



The screenshot shows the 'EAS NET' configuration page with several sections:

- EAS NET** (selected tab) | CAP Decode | Stream MPEG | Net CG | Net Switch | Net GPIO
- Configure EAS NET Decoding.** Changed Settings effective when Accept Changes is pushed.
  - EAS\_NET decode from remote EAS NET sending devices. **Disabled.** Check to enable.
- Configure EAS NET Web audio streaming.** Changed Settings are not effective until Accept Changes is pushed.
  - EAS\_NET Web (HTTP) Alert Audio streaming during alerts. **Disabled.** Check to enable.
- Configure EAS NET Clients.** Except for Add/Delete Clients, changed Settings are not effective until Accept Changes is pushed.
  - Master Switches**
    - Forwarded Alerts can be sent to EAS\_NET devices. **Enabled.** Uncheck to disable.
    - Encoder Originated Alerts can be sent to EAS\_NET devices. **Enabled.** Uncheck to disable.
    - Decoded Alerts can be sent to EAS\_NET devices. **Disabled.** Check to enable.
- Configure EAS NET Client Connection**
  - \*IPAWS - Production (dropdown) **Select EAS\_NET client**
    - Add EAS\_NET Client Interface (effective immediately)
    - Duplicate EAS\_NET Client Interface (effective immediately)
    - Delete this EAS\_NET interface (effective immediately)
  - There are 3 defined client interfaces (max is 8).
  - 15 EAS NET Timeout in seconds (for advanced use only).
  - IPAWS - Production **Client Interface Name**
    - ENABLE Client Interface. **Enabled.** Uncheck to disable client.
  - Event Data Protocol**
    - EAS NET
    - Common Alert Protocol (CAP)

- Scroll down to the **CAP Event Data IP control options:** area

- Modify the entry in the **IPAWS CAP Aggregator Web Address** field from: **integration.fema.gov** to: **integration.aws.fema.gov**

- The table below shows the old and new entries for each field.

Production		IPAWS CAP Aggregator Web Address		IPAWS CAP Aggregator URL Path	
Old	https://	integration.fema.gov	/	IPAWS_CAPService/IPAWS	
New	https://	integration.aws.fema.gov	/	IPAWS_CAPService/IPAWS	

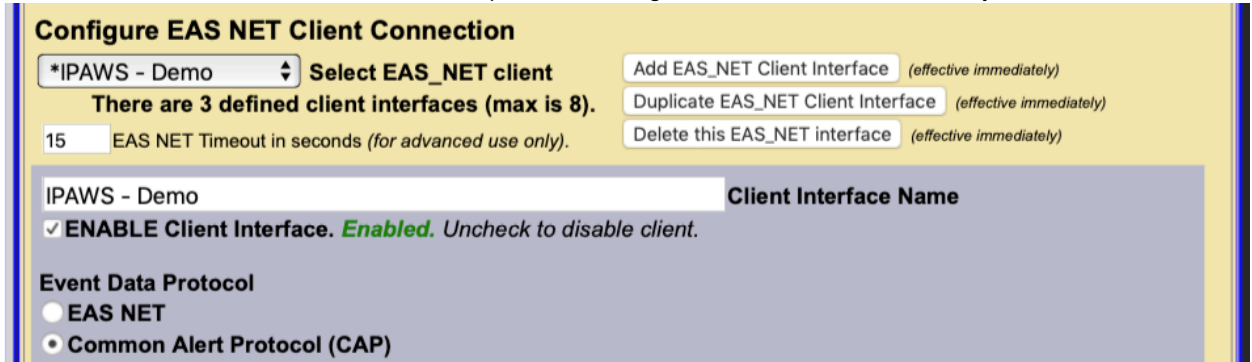
- The new entry should appear as shown below

- Scroll to the bottom and click **Accept Changes**.
- Test the connection by scrolling back up to the **CAP Event Data IP control options** area, locate the Test connection button and click it.

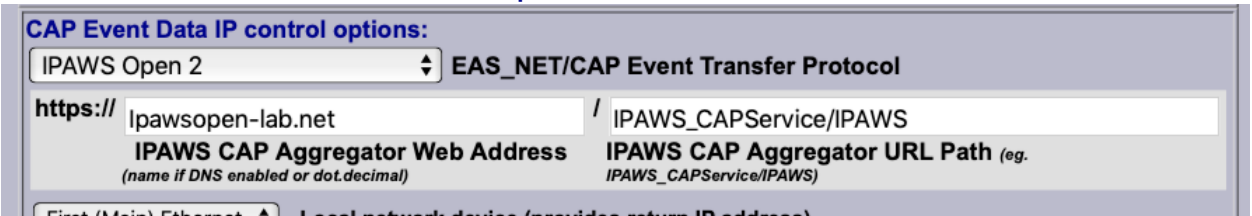
- The area just below the Test connection button should indicate **"... TCP Connection to integration.aws.fema.gov:443 is OK"** and concludes this section's change.
- Continue to the next section to modify the settings for the IPAWS Test client.

**Changing the FEMA IPAWS Cloud server link for Demonstrations (test).**

1. Log in to the DASEOC
2. Go to **Setup > Net Alerts > EAS NET**
3. Under **Configure EAS NET Client Connection** use the pull-down menu to select the client used to connect with the IPAWS test lab as shown in the example below noting the Client Interface Name may be different.



4. Scroll down to the **CAP Event Data IP control options:** area

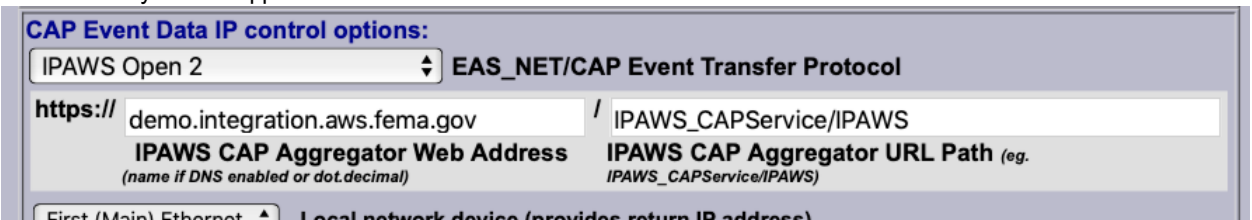


5. Modify the entry in the **IPAWS CAP Aggregator Web Address** field from: **ipawsoopen-lab.net** to: **demo.integration.aws.fema.gov**

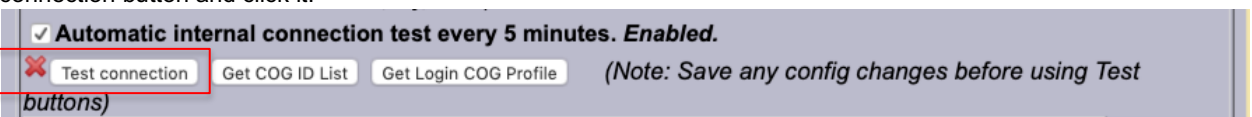
6. The table below shows the old and new entries for each field.

Production		IPAWS CAP Aggregator Web Address		IPAWS CAP Aggregator URL Path	
Old	https://	ipawsoopen-lab.net	/	IPAWS_CAPService/IPAWS	
New	https://	demo.integration.aws.fema.gov	/	IPAWS_CAPService/IPAWS	

7. The new entry should appear as shown below



8. Scroll to the bottom and click **Accept Changes**.
9. Test the connection by scrolling back up to the **CAP Event Data IP control options** area, locate the Test connection button and click it.



10. The area just below the Test connection button should indicate **"...TCP Connection to integration.aws.fema.gov:443 is OK"** and concludes the changes.